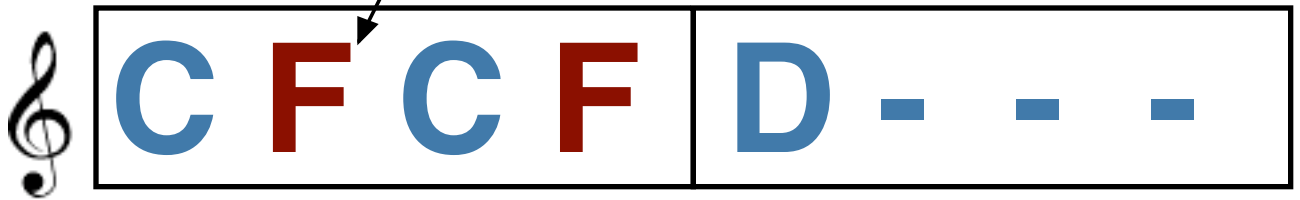
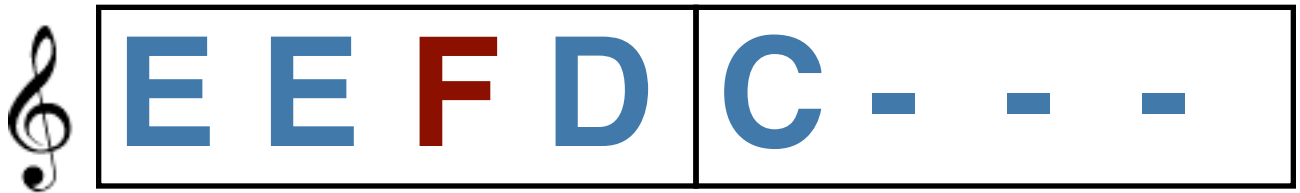


Playing with F

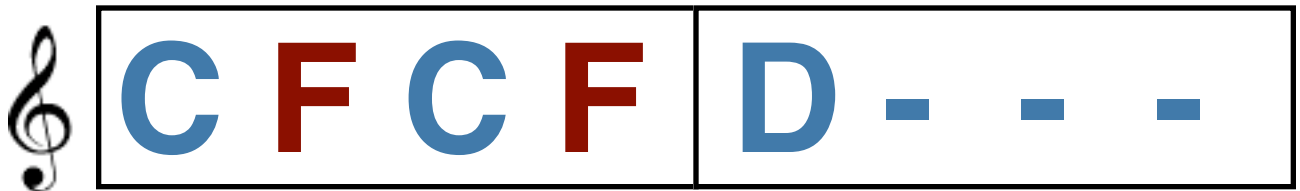
(F = Finger #4)



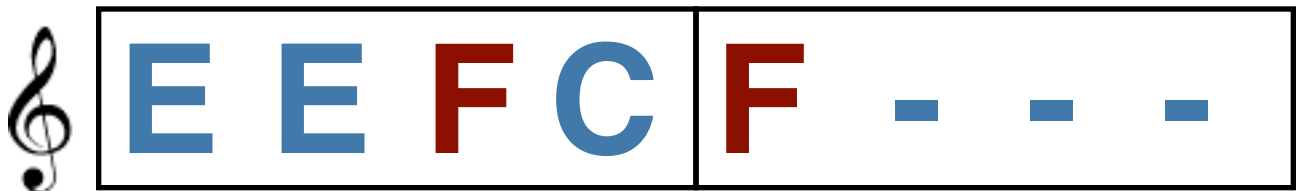
A musical staff with a treble clef. The first measure contains the notes C, F, C, F. The second measure contains the note D followed by three rests. The notes C and F are blue, while F and F are red. An arrow points from the text "(F = Finger #4)" to the first red F.



A musical staff with a treble clef. The first measure contains the notes E, E, F, D. The second measure contains the note C followed by three rests. The notes E, E, and D are blue, while F and C are red.

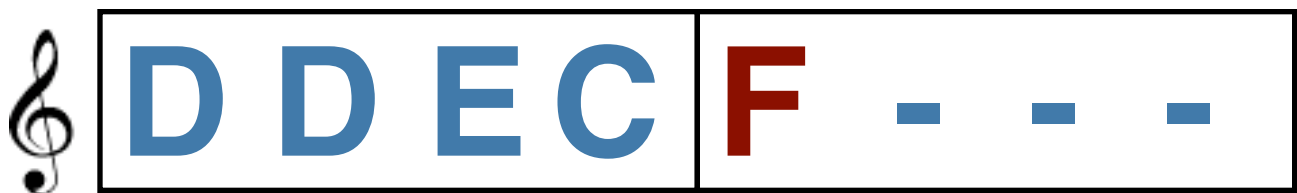
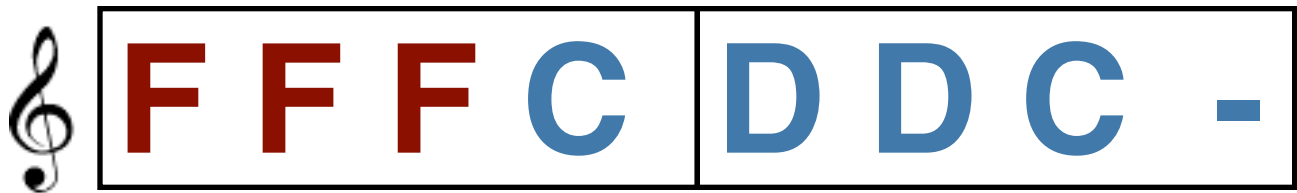
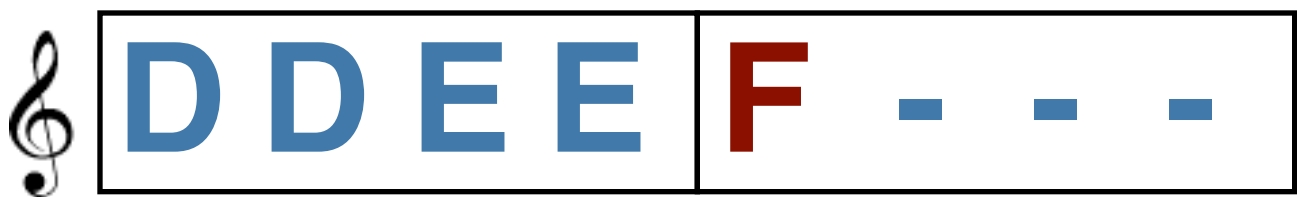
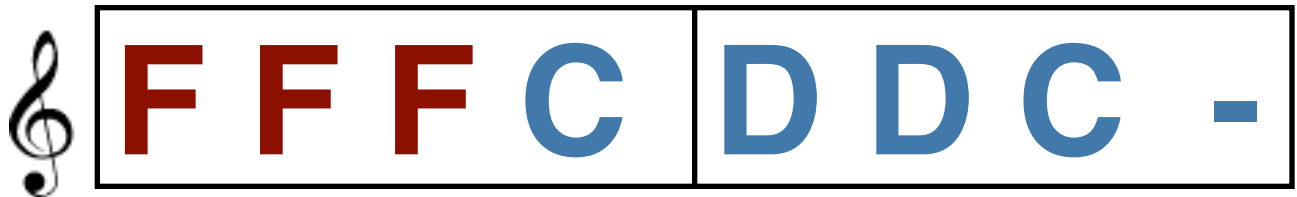


A musical staff with a treble clef. The first measure contains the notes C, F, C, F. The second measure contains the note D followed by three rests. The notes C and C are blue, while F and F are red.



A musical staff with a treble clef. The first measure contains the notes E, E, F, C. The second measure contains the note F followed by three rests. The notes E, E, and C are blue, while F and F are red.

F Song



Ode to Joy

