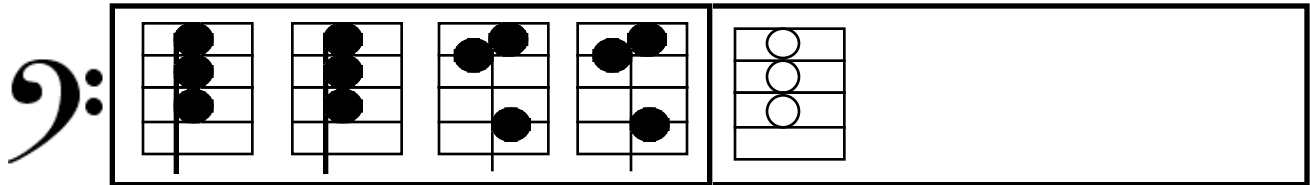
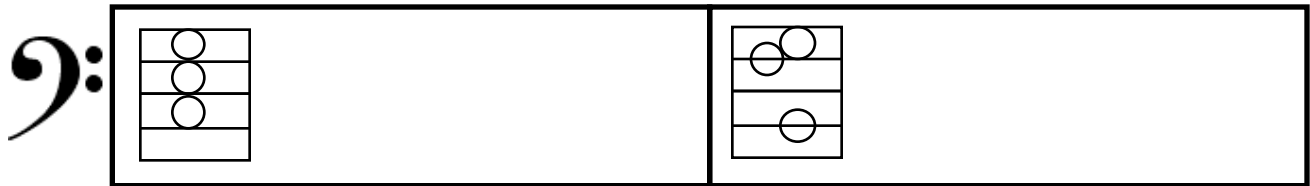
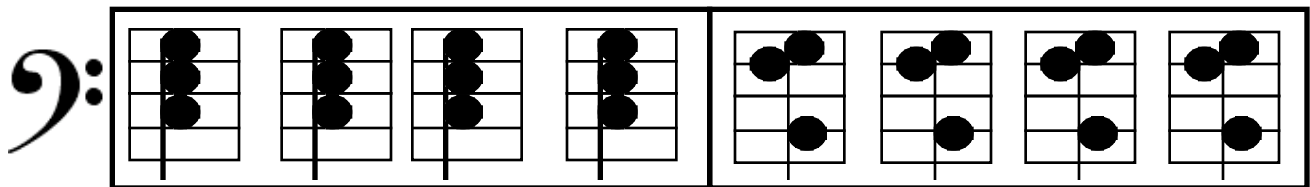
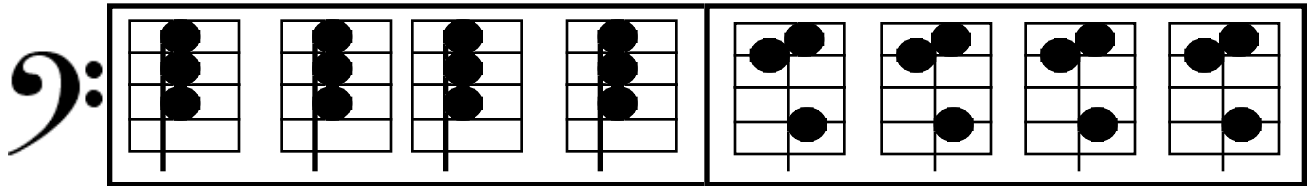


## C & G7 Chord Practice #1



<http://learnpianoonline.com/lesson3/page10.html>

## C & G7 Chord Practice #2

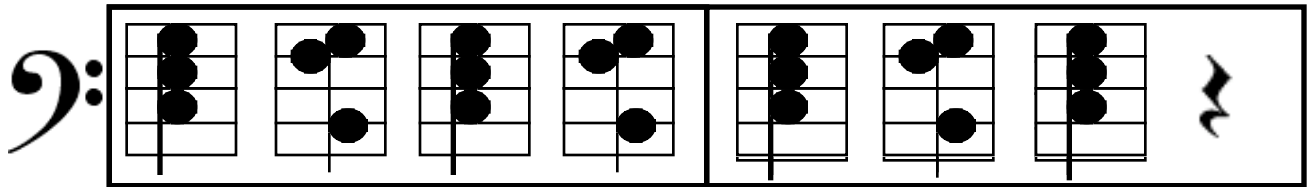
Bass clef: C major (root position), C major (first inversion), G7 (root position), G7 (first inversion), C major (root position), C major (first inversion), C major (root position), fermata.

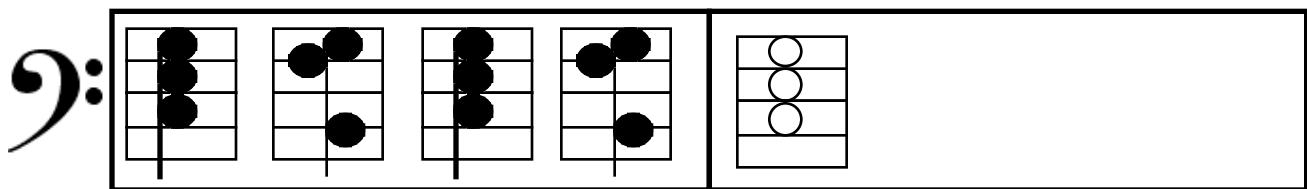
Bass clef: C major (root position), C major (first inversion), G7 (root position), G7 (first inversion), C major (root position), C major (first inversion), C major (root position), fermata.

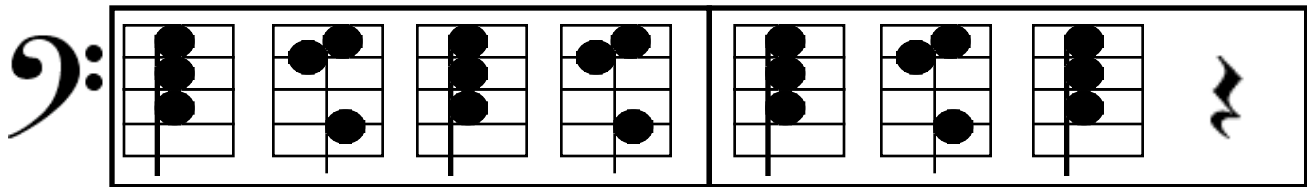
Bass clef: C major (root position), G7 (root position).

Bass clef: C major (root position), C major (first inversion), G7 (root position), G7 (first inversion), C major (root position).

## C & G7 Chord Practice #3

Bass clef: 

Bass clef: 

Bass clef: 

Bass clef: 